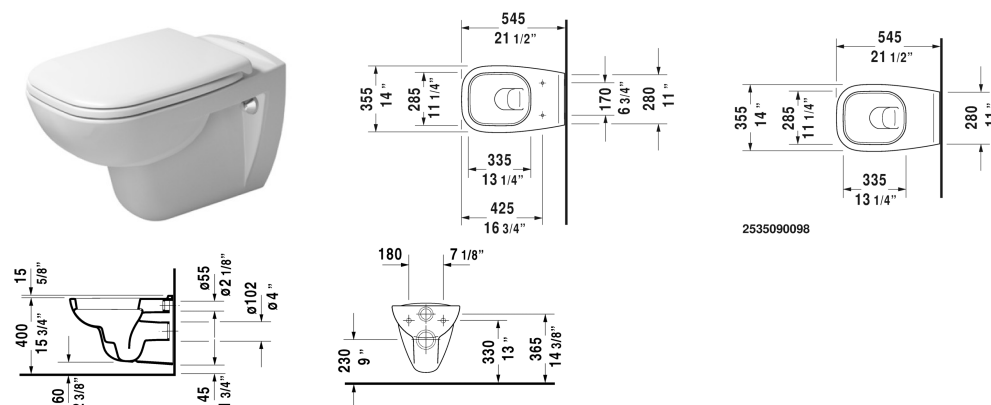


## D-Code Toilet wall-mounted # 253509..922

| < 14" Inch > |



Toilet wall-mounted	Dimension	Weight	Order number
washdown model, cUPC listed			
<b>Colors</b>			
00 White 20 HygieneGlaze (an antibacterial ceramic glaze that provides almost indefinite effectiveness)			
<b>Variant</b>			
♦ 1.6/0.8 gpf	14" x 21 1/2" Inch	44.1 lb	253509..922
<b>Infobox</b>			
In-wall tank & carrier and actuator plate required for installation / Refer to page XXX, If in-wall carrier is not used, hardware # 006500 is recommended			
Sigma 01 flush plate, dual flush for toilets, White	9 5/8" x 6 1/2" Inch		115770
Geberit in-wall tank and carrier for toilets, width 19 3/4", depth 5 1/2" height (adjustable) 43" - 47"	19 3/4" x 5 1/2" Inch	38 lb	111335
Noise reduction gasket for wall-mounted toilet		0.7 lb	005020
Hardware for wall-mounted bidet and wall-mounted toilet	Ø 1/2" x 7 1/8" Inch	0.4 lb	006500
<b>Suitable products</b>			
Toilet seat and cover hinges plastic, with slow close,			006739
Toilet seat and cover hinges stainless steel, without slow close,			006731

All drawings contain the necessary measurements which are subject to standard tolerances. They are stated in inch & mm and are non-binding. Exact measurements, in particular for customized installation scenarios, can only be taken from the finished ceramic piece.