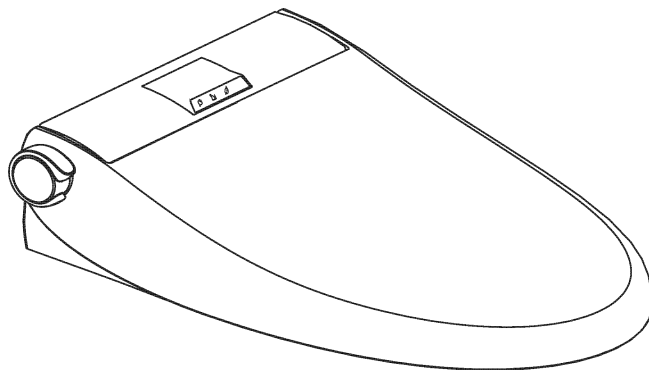


Bidet inteligente PB502
Manual de instalación y operación



Suites

1 Precauciones de seguridad



PRECAUCIÓN Indiferencia a esto puede causar daño.



Earthing

Earthing is required before using and plugged into an (AC220-240V ,50/60Hz)power outlet.

*Otherwise it will cause fire or electric shock.



Prohibited

Do not use a damage power cord,plug or loose electric outlet.

*Otherwise it may cause fire or electric shock.



Wet hands
prohibited

Do not insert or disconnect the power plug with wet hands.

*Otherwise it may cause electric shock.



Fire prohibited

Keeping cigarettes and other open flames away from the product.

*Otherwise it may cause fire ,electric shock,heat or short circuit.



Disassembling,
remodeling prohibited

Never disassemble,repair through unauthorised service person.

*Otherwise it may cause fire ,electric shock,heat,short circuit or mechanical damage.



Prohibited

Children,elderly,patients and those who are with physically limited ability should be accompanied to use it.

*Long time use may cause low temperature scalding.

1 Safety Precautions



CAUTION May cause electric shock, fire, injury, property damage.



Prohibited

Do not strike, yank, twist, excessively bend, damage, alter, or heat the power cord.



Prohibited

Do not slam or close the seat cover forcefully.



Prohibited

Do not stand on the top of the seat cover, seat or main body unit. Or it will damage or break the unit.



Prohibited

When cleaning or not using the product for a long period of time, be sure to disconnect ELCB safely or remove cover plug.



Prohibited

Prevent children from throwing substances or inserting their hands into the dryer outlet or onto the nozzle.



Prohibited

Never immerse the product into the water.



Prohibited

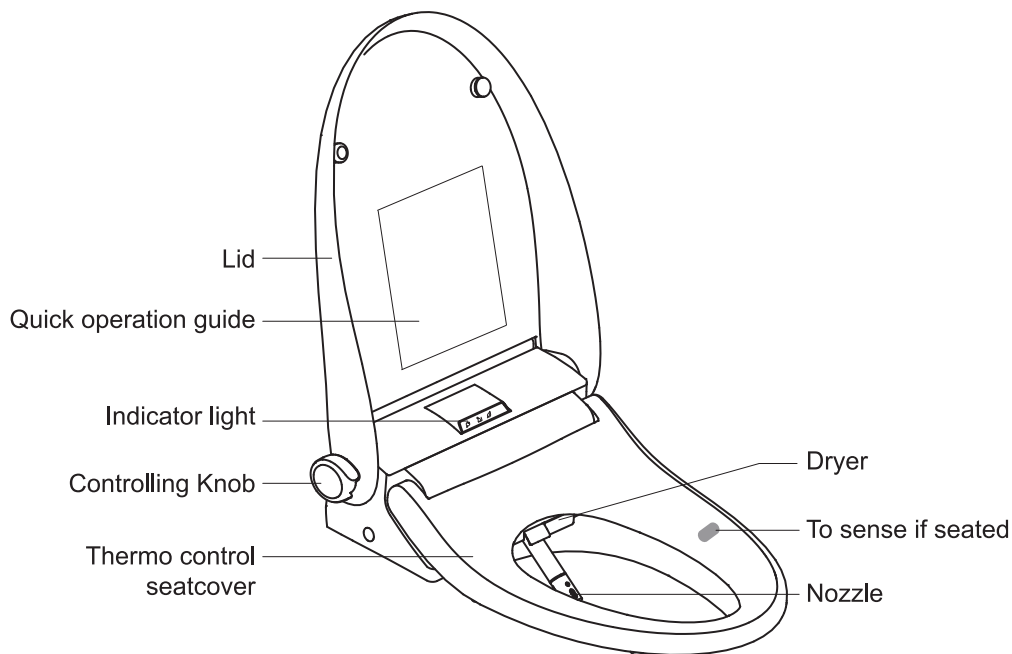
Please do not plug in the electrical until installation is finished completely.




Prohibited


Earthing should be done in order to prevent short circuits or electric shock. Please consult with licensed electrician in case a earthing outlet is not available.


2 Parts&Configuration



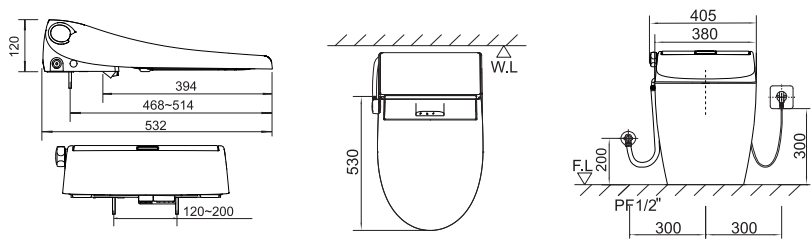
■ Indicator light

	Standby Plug in and the lights turns on. If not, there is something wrong with the circuitry.
---	---

	Sitting When the user is sitting down, the light of sitting turns on.
---	---

	Energy-saving When the water temperature is at the setting 0, the light of energy-saving turns on. When the water temperature increases, the light of energy-saving turns off.
---	---

3 Specifications

Item	Description	Item	Description
Electric supply	AC(220-240)V, 50/60Hz	Wash Function	
Electric power	1250-1300W	Rear shower flow	350-1000ml/Min
Water pressure range	0.07MPa-0.75Mpa	Front shower flow	350-1000ml/Min
Water supply temperature range	8-35°C	Heating	Instant heating
Environmental temperature range	8-40°C	Safety device	Anti-dry/Burn protection,Relief valve,Pressure stabilization valve,Thermal fuse
Water connection cross section	Water pipe supply	Dry	
Toilet Seat Heating		Air speed	≥4m/s
		General heater power	200W
		Safety device	NTC and Thermal fuse
General heater power	35W	Product dimension	530×405×120mm
Safety device	NTC and Thermal fuse	Product weight	7±0.5KG
Deodorant way	Photocatalyst deodorization		
Dimension			

4 Warnings for Operation

Confirm the water and power supply and check if there is water leakage

- Otherwise the product may not work

Please don't spill urine on cover and nozzle

- It may contaminated the cover and nozzle

Prevent from water seepage while cleaning the product

- Otherwise it may cause a hazzard to the product

Please use the radio far from the product

- The radio may cause noise

Please pull out the power plug when thundering and lightening

- Otherwise it may cause product damage

Don't throw newspaper, diapers or the other easy blockage into the toilet

- Otherwise it may cause plugging up

Please don't rely on cover when using product

- It may damage the product.

Don't hit the product forcefully

- Otherwise it may break or lead to water or electric leakage

Please don't place stuff on the seat

- Otherwise it may cause induction failure to the seat

Please don't exposed product under sun

- It may cause fade , seat temperature instability

Prevent from water seepage while cleaning the product

- Otherwise it may cause malfunction to the product

Use neutral cleanser during cleaning and clean up in time

- Otherwise it may cause product damage or breakage

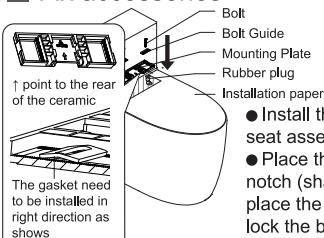
Regular point inspection by the user (monthly self-inspection)

- Regularly check if there is water leakage on the inlet pipe or product.
- For product equipped with leakage protection, need to regularly check if there is function failure.

5 Installation & Removal

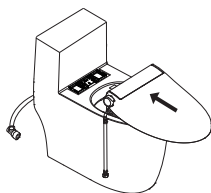
Toilet seatcover with side water & electronic

1 Fix accessories



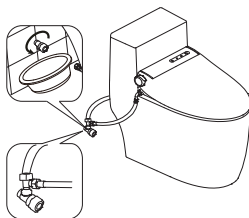
- Install the parts of the fixed seat assembly in sequence.
- Place the mounting plate in the notch (shadow position), then place the gasket and screws and lock the bolts, remove the installation paper in the end.

2 Fix seat



- The cover plate is aligned with the mounting base plate and pushed to the arrow direction.

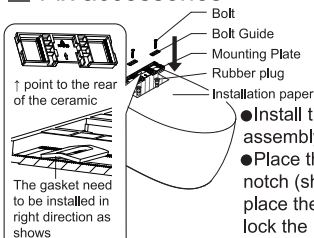
3 Water connection



- Please drain off the sewage in the pipeline before water connection, in case to damage the product.
- Lock the movable nut of the tee joint and the outlet of the angle valve; lock the new cover inlet hose and the water tank inlet hose on the tee joint respectively.

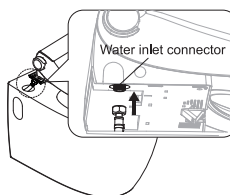
Toilet seatcover with button water & side electronic

1 Fix accessories



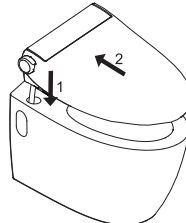
- Install the parts of the fixed seat assembly in sequence.
- Place the mounting plate in the notch (shadow position), then place the gasket and screws and lock the bolts, remove the installation paper in the end.

2 Water connection



- Please drain off the sewage in the pipeline before water connection, in case to damage the product.
- Lock the new inlet hose connection with the inlet joint of the cover seat.

3 Fix seat



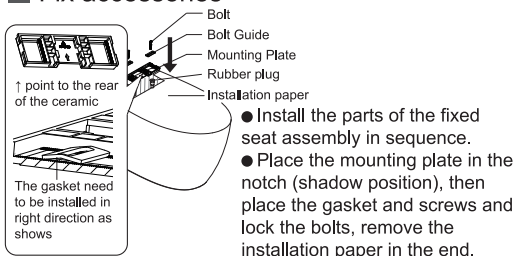
- The cover plate is aligned with the mounting base plate and pushed to the arrow direction.

If the installation is not ideal, please refer to the following steps to remove the reassembly.

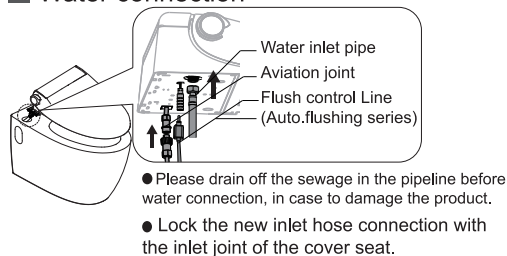
5 Installation & Removal

Toilet seatcover with button water & electronic

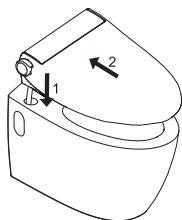
1 Fix accessories



2 Water connection

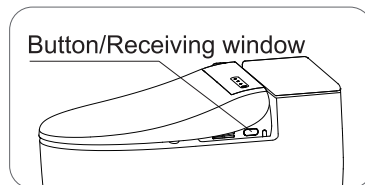


3 Fix seat

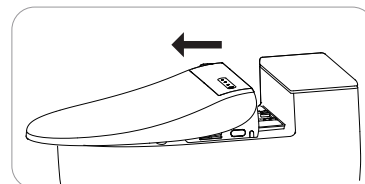


Seat removal

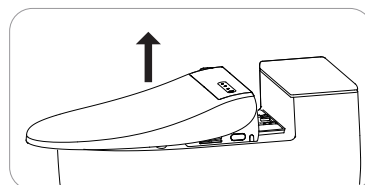
- 1 Press the button/receiving window and hold on for while.



- 2 Follow the direction of arrow and pull off the mounting plate.



- 2 Follow the direction of arrow and pull off the cover.



If the installation is not ideal, please refer to the following steps to remove the reassembly.

6 Maintenance

■ Daily cleaning precautions

*Don't spray water on the product.

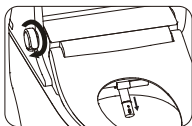
*Clean it carefully , don't leave the cleaning agent in the gap between the cover and the ceramic, otherwise it may casue product failure.

*The sensor area should be kept clean ,or it may cause malfuncton when using the toilet.

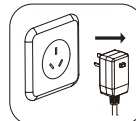
■ Cleaning steps

1 Extend the nozzle

*Do not sit on the seat,make sure if seated sensor is not activated.



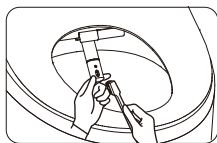
2 Unplug the power



*The appearance of power plug depends on the goods.

3 Clean the nozzle

*Use a brush or soft cloth to clean the nozzle.



4 Clean the product

*Regularly wipe the seat with a dry cloth or sponge, or clean with a wet cloth and mild detergent.



Toilet
cleanser



Thinner
Benzene

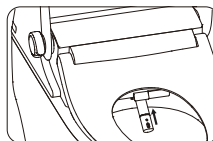
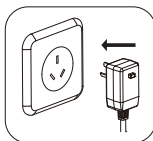


Bug
killer



Sand
paper

5 Power-on and nozzle will be retracted automatically



7 Troubleshooting

■ Checking firstly

Please check followings before judging something as fault.

Check power supply

*Make sure the product is connected to power.

Check water supply

*Make sure main supply valve is open.

*Confirm there are no leaks from hoses or water supply.

■ Fault diagnosis

Type	Problem	Factors to check
Unit operation	The bidet not working	*Check the remote control batteries are ok or not. *Be sure to sit on the seat correctly so that the body sensor switch will function properly.
	Bidet shut off during use	*Maybe washing or drying time exceed the system default setting for safe single use, just press the button again. *Be sure to sit on the seat correctly so that the body sensor switch will function properly.
	Body unit shakes	*Tie the screws properly (do not over-tight).
	The product works disorder	*Unplug the product and restart.
Washing	The nozzle doesn't come out	*Be sure to sit on the seat correctly so that the body sensor switch will function properly.
	Nozzle can't move to right washing position	*Maybe you are sitting much too forward and the nozzle can't reach to the right position. *Check whether the nozzle position is adjusted to right position. *Check the supply water pressure is too low or not (<0.07Mpa).

7 Troubleshooting

Washing	The water is leaking	*After checking the plumbing is correctly connected, still water is leaking from the main unit disconnect and contact service personnel.
	The water does not spray as set	*Check the nozzle is clogged or not. *Be sure to sit on the seat correctly so that the body sensor switch will function properly.
	Water pressure is low	*Check whether the water flow is set at low. *Check whether the nozzle is clogged. *Check whether the water valve is fully open. *Check whether the water supply hose is leaking.
	Water not heating	*Check the water temperature is set at right level or not. *The heating system is damaged, please contact service personnel.
Drying	Dryer does not work	*Make sure user sat properly on the seat sensor.
	Cold air blowing from the air dryer	*Check the air temperature is set at right level or not.
Remote control	Remote control is not working	*Check the battery is enough or not. *Be sure the remote control is installed in the valid range.
	The remote control could not work	*Make sure remote control have connect frequency with bidet toilet. If not, follow the steps to adjust it. Frequency setting procedure: 1. Power off toilet, press stop button until temperature light blink. 2. Power on toilet, when light stop blinking, frequency setting is ok. *If it fails, repeat above step 1 and step 2.

If you are unable to resolve the issue after checking the above steps, please contact us for support.

8 Warm prompt

■ Due to the improvement of the product, the picture of the product may not be completely consistent with the real product, so the appearance and color of the product shall be subject to the real product.

Suites

Hygolet de México SA de CV
Av. Emiliano Zapata 452 Col. Santa Cruz Atoyac
Benito Juárez CP 03310 CDMX
Tel .55 56053214 contacto@hygolet.mx www.hygolet.mx