

Instructions for PB502Series remote control unit

■ Installation:

- 1.Install the battery.
- 2.Stick one side of the cotton adhesive tape to the slot at the back of bracket.
- 3.Paste silicon sealant around the back of the rack.
- 4.Attach the rack to clean and smooth wall. Must wait for 24 hours before setting the remote control.



Warnings: ● Prohibited to install in moisture environment or on a wall with water leakage. ● Please confirm the "+" "-" pole while inserting the batteries.

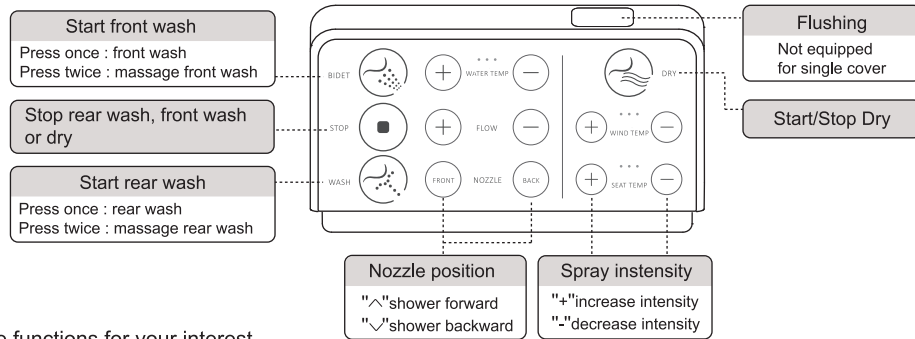
■ Preperation:

- 1.Power off toilet, press "STOP" button until temperature lights blinks.
- 2.Connect main power, when the temperature indicator light stop blinking, frequency setting is ok.



● In case of malfunction happened to the remote control unit, need to follow the pairing process as shown above. If pairing failure, repeat step 1 and 2.

■ Operation instruction:



■ More functions for your interest

1. press"STOP"and"WATER TEMP"at the same time for 3s,notification tone shift between on and off.
2. press"STOP"and"NOZZLE ∨"at the same time for 3s,with a click sound, auto.odour extraction shift between on and off.
3. press"STOP"and"WIND TEMP"at the same time for 3s,with a click sound,LED night light shift to other settings:"0-1-2-3-4-5-6-0".
4. press"STOP"and"FLUSH"at the same time for 3s,it is back to factory settings.
5. press"STOP"and"FLOW -"at the same time for 3s,auto flushing and sitting sensor shift between on and off(When it is off,the toilet's rear shower, front shower and dryer can still work without sitting on it.auto. flushing function will be closed).

Tips: 1. One click sound means valid operation, two click sound mean invalid operation;
2. When LED display becomes dark, operation becomes slower,please change batteries.

Instructions forPB502 Series remote control unit

■ Installation:

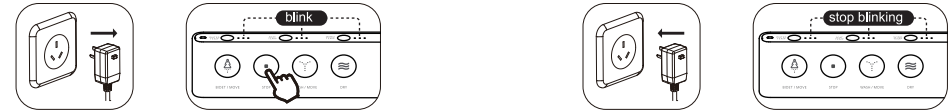
- 1.Install the battery.
- 2.Stick one side of the cotton adhesive tape to the slot at the back of bracket.
- 3.Paste silicon sealant around the back of the rack.
- 4.Attach the rack to clean and smooth wall. Must wait for 24 hours before setting the remote control.



Warnings: ● Prohibited to install in moisture environment or on a wall with water leakage. ● Please confirm the "+" "-" pole while inserting the batteries.

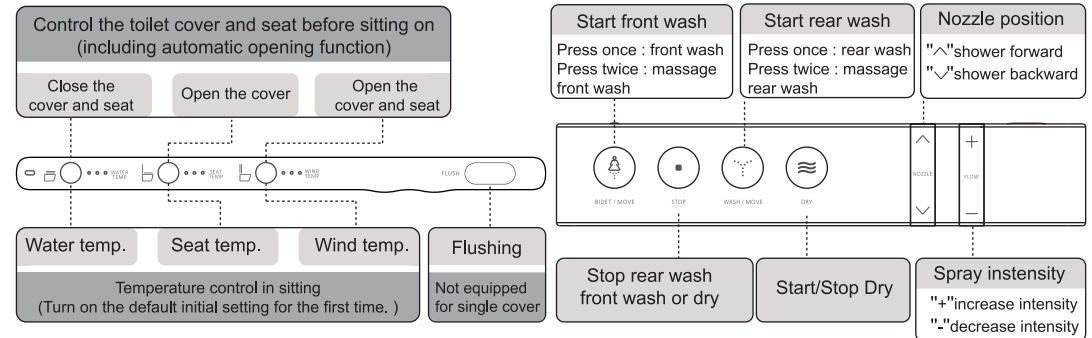
■ Preperation:

- 1.Power off toilet, press "STOP" button until temperature lights blinks.
- 2.Connect main power, when the temperature indicator light stop blinking, frequency setting is ok.



● In case of malfunction happened to the remote control unit, need to follow the pairing process as shown above. If pairing failure, repeat step 1 and 2.

■ Operation instruction:



■ More functions for your interest

1. press"STOP"and"WATER TEMP"at the same time for 3s,notification tone shift between on and off.
2. press"STOP"and"NOZZLE ∨"at the same time for 3s,with a click sound, auto.odour extraction shift between on and off.
3. press"STOP"and"WIND TEMP"at the same time for 3s,with a click sound,LED night light shift to other settings:"0-1-2-3-4-5-6-0".
4. press"STOP"and"FLUSH"at the same time for 3s,it is back to factory settings.
5. press"STOP"and"FLOW -"at the same time for 3s,auto flushing and sitting sensor shift between on and off(When it is off,the toilet's rear shower, front shower and dryer can still work without sitting on it.auto. flushing function will be closed).
- 6.Press "WATER TEMP ☐ " and "WIND TEMP ☐ " at the same time for 3s, auto flipping shift between on and off.

Tips: 1. One click sound means valid operation, two click sound mean invalid operation;
2. When LED display becomes dark, operation becomes slower,please change batteries.